

Custom receptacle plates that ship from stock! Faceplates and inserts can be easily arranged in any configuration, to suit your requirements. In stainless steel or matte black.



## FACEPLATES

### Model

Single gang faceplate	5001 (SS/BL)
Double gang faceplate	5002 (SS/BL)
Three gang faceplate	5003 (SS/BL)
Four gang faceplate	5004 (SS/BL)
Five gang faceplate	5005 (SS/BL)
Six gang faceplate	5006 (SS/BL)



## DMX512 CONNECTORS

### Model

Male 5-pin XLR insert (M)	5101 (SS/BL)
Female 5-pin XLR insert (F)	5102 (SS/BL)
One Male, one Female 5-pin XLR insert (M,F)	5121 (SS/BL)
Two Male 5-pin XLR insert (M,M)	5122 (SS/BL)
Two Female 5-pin XLR insert (F,F)	5123 (SS/BL)
One Male 5-pin XLR, one Ethercon™ RJ45 insert	5141 (SS/BL)
One Female 5-pin XLR, one Ethercon™ RJ45 insert	5142 (SS/BL)



5121SS

## ETHERNET

### Model

One Ethercon™ RJ45 insert	5105 (SS/BL)
Two Ethercon™ RJ45 insert	5115 (SS/BL)
One Ethercon™ RJ45, one Male 5-pin XLR insert	5141 (SS/BL)
One Ethercon™ RJ45, one Female 5-pin XLR insert	5142 (SS/BL)
One Ethercon™ Feedthru insert (female RJ45 jack on rear board)	5165 (SS/BL)

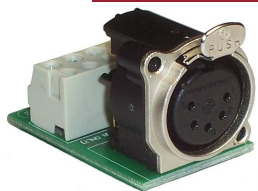
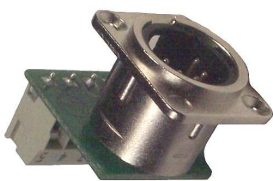
## HANDHELD REMOTE (Strand)/REMOTE FOCUS UNIT (ETC)

### Model

Female 6-pin XLR insert (ETC RFU)	5110 (SS/BL)
Female 6-pin XLR insert (Strand/Colortran HHR)	5111 (SS/BL)
Male 6-pin XLR insert (ETC RFU)	5112 (SS/BL)
Male 6-pin XLR insert (Strand/Colortran HHR)	5113 (SS/BL)
Two Female 6-pin XLR insert (Strand/Colortran HHR)	5124 (SS/BL)
One Male, one Female 6-pin XLR insert (Strand/Colortran HHR)	5125 SS
One Female 6-pin, one Male 5-pin XLR insert (Strand/Colortran HHR)	5131 SS
Two Female 6-pin XLR insert (ETC RFU)	5134 SS
One Female, one Male 6-pin XLR insert (ETC RFU)	5135 SS



Custom receptacle plates that ship from stock! Faceplates and inserts, easily arranged to suit your requirements. Available in stainless steel or black. Or connectors alone.



PASS-THROUGH CONNECTOR (NEW!)	Model
One Male, one Female 5-pin XLR Pass-Through w/ user switch	5180BL

DMX 512 TO IDC CONNECTORS (NEW!)	Model
Male 5-pin XLR insert (M)	5201 (SS/BL)
Female 5-pin XLR insert (F)	5202 (SS/BL)
One Male, one Female 5-pin XLR insert (M,F)	5221 (SS/BL)
Two Male 5-pin XLR insert (M,M)	5222 (SS/BL)
Two Female 5-pin XLR insert (F,F)	5223 (SS/BL)

MISCELLANEOUS	Model
Blank insert	5100 (SS/BL)
One Male 4-pin XLR insert	5103 (SS/BL)
One Female 4-pin XLR insert	5104 (SS/BL)
One Male 3-pin XLR insert	5107 (SS/BL)
One Female 3-pin XLR insert	5108 (SS/BL)
Two Male 3-pin XLR insert	5127 (SS/BL)
Two Female 3-pin XLR insert	5128 (SS/BL)
One Male, one Female 3-pin XLR insert	5129 (SS/BL)
One Female 3-pin, one Female 5-pin XLR insert	5136 (SS/BL)
One BNC bulkhead-type insert	5151 (SS/BL)
Two BNC bulkhead-type insert	5152 (SS/BL)

CONNECTORS WITH TERMINALS ONLY (no insert plate)	Model
One Male 5-pin XLR (D-type)	40-0024
One Female 5-pin XLR (D-type)	40-0025
One Male 6-pin XLR (D-type, Strand HHR)	40-0026
One Female 6-pin XLR (D-type, Strand HHR)	40-0027
One Female 6-pin XLR (D-type, ETC RFU)	40-0028
One Male 6-pin XLR (D-type, ETC RFU)	40-0029
One Male 5-pin XLR (B-type)	40-0051
One Female XLR (B-type)	40-0052
One Male 3-pin XLR (B-type)	40-0062
One Female XLR (B-type)	40-0063