

**SPECIFICATIONS**

SURFACE MOUNT ENCLOSURE  
 MATERIAL - 18 GA. COLD ROLLED STEEL  
 FINISH - MATTE BLACK POWDER COAT  
 35mm x 7.5mm DIN RAIL MOUNTING  
 10.2"x13.2"x.38" FORMED COVER (included)

**4807 - 4 way eDIN Installation Repeater**

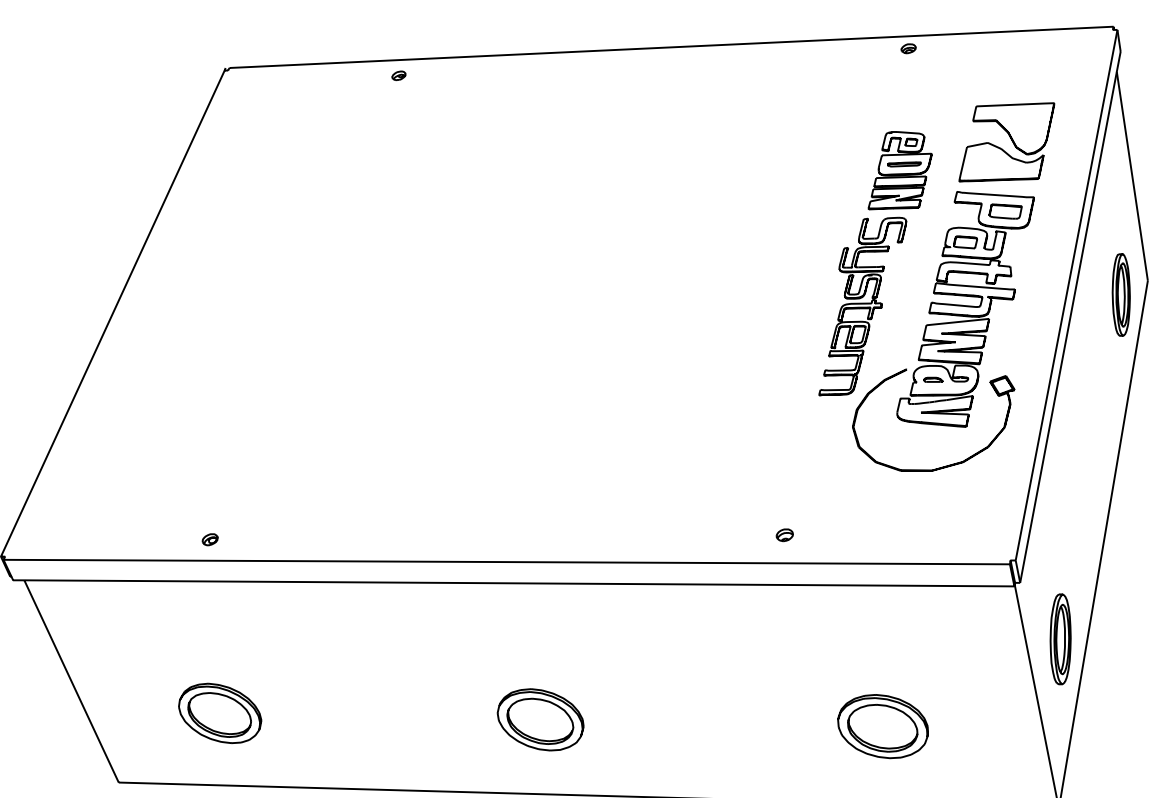
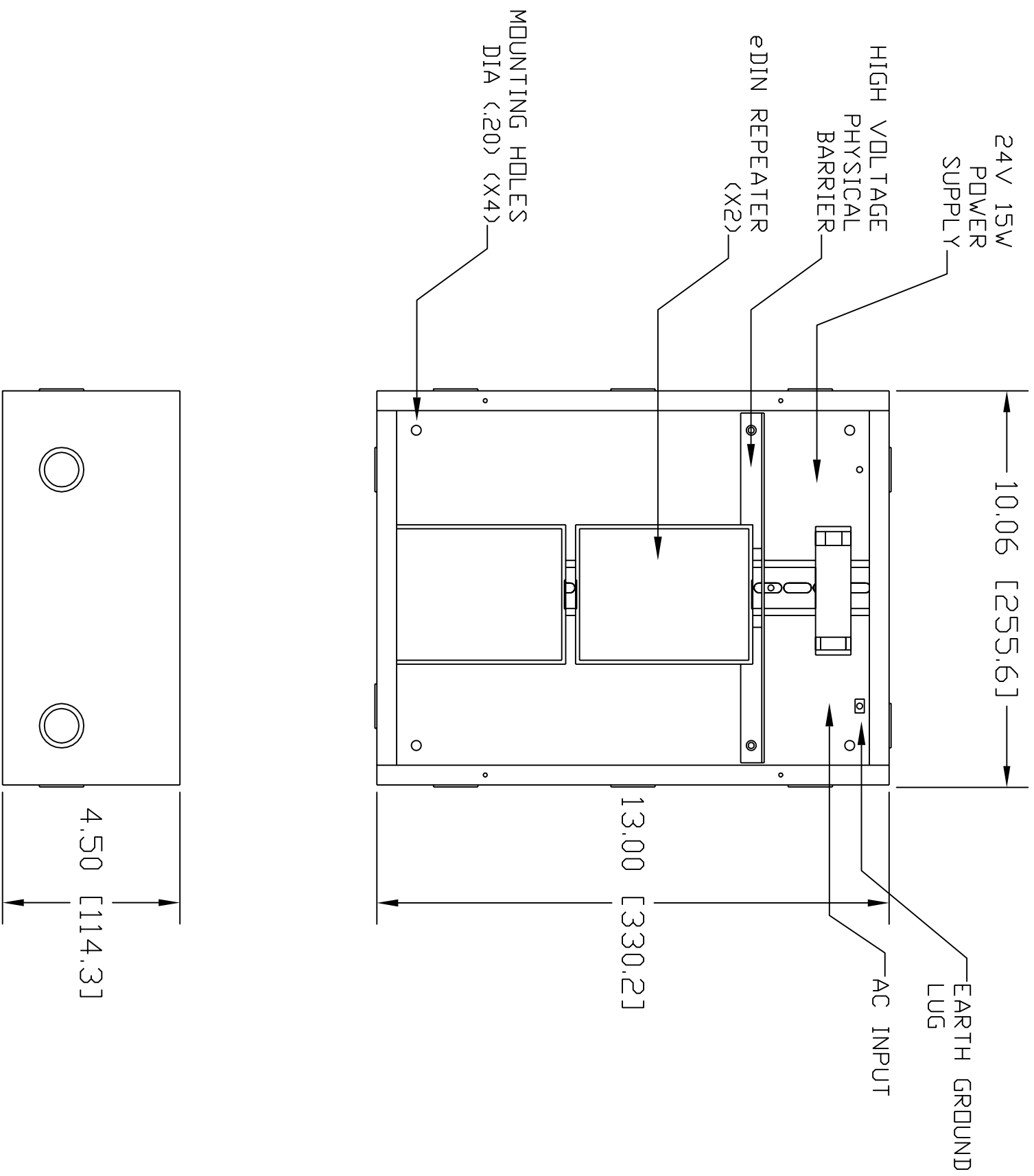
FILENAME: 480X-eDIN Installation Repeater.DWG PART NUMBER: 4807



**Pathway Connectivity Inc.**  
 103 Inglewood Plaza, 1439 17th Avenue SE  
 Calgary, Alberta, Canada T2G 1J9  
 Phone: +1(403)243-8110 Fax: +1(403)287-1281  
<http://www.pathwayconnect.com>

DRAWN BY:	RSA, Pathway Connectivity Inc.
DATE:	Jan 2010
CHECKED:	DAVID HIGGINS
SCALE:	NTS
UNITS:	INCHES [mm]

REV **B**



**SPECIFICATIONS**

SURFACE MOUNT ENCLOSURE  
 MATERIAL - 18 GA. COLD ROLLED STEEL  
 FINISH - MATTE BLACK POWDER COAT  
 35mm x 7.5mm DIN RAIL MOUNTING  
 10.2"x13.2"x.38" FORMED COVER (included)

**4808 - 8 way eDIN Installation Repeater**

FILENAME: 480X-eDIN Installation Repeater.DWG

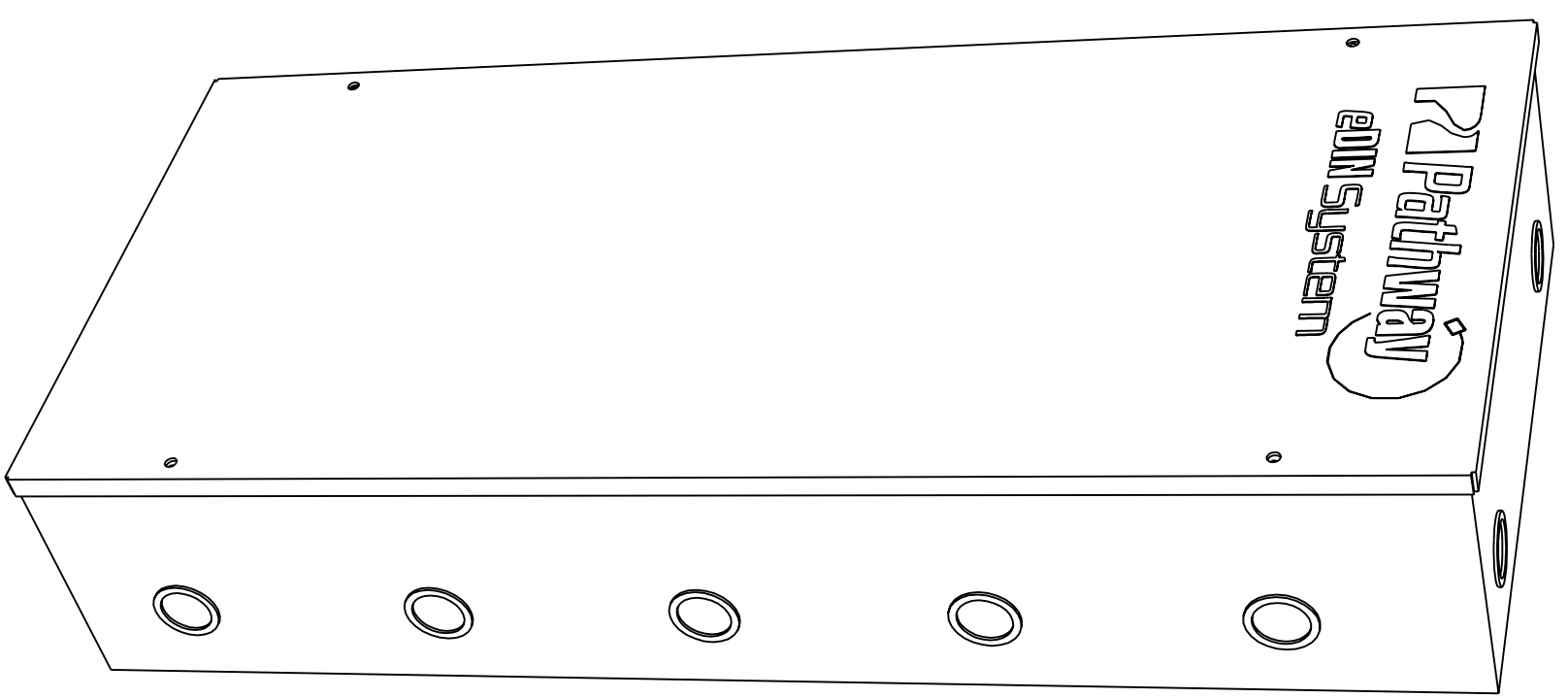
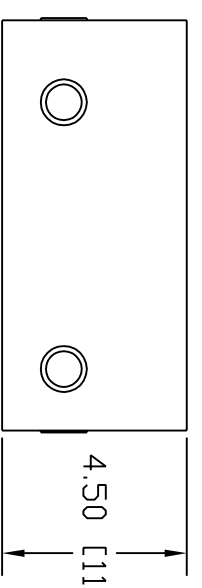
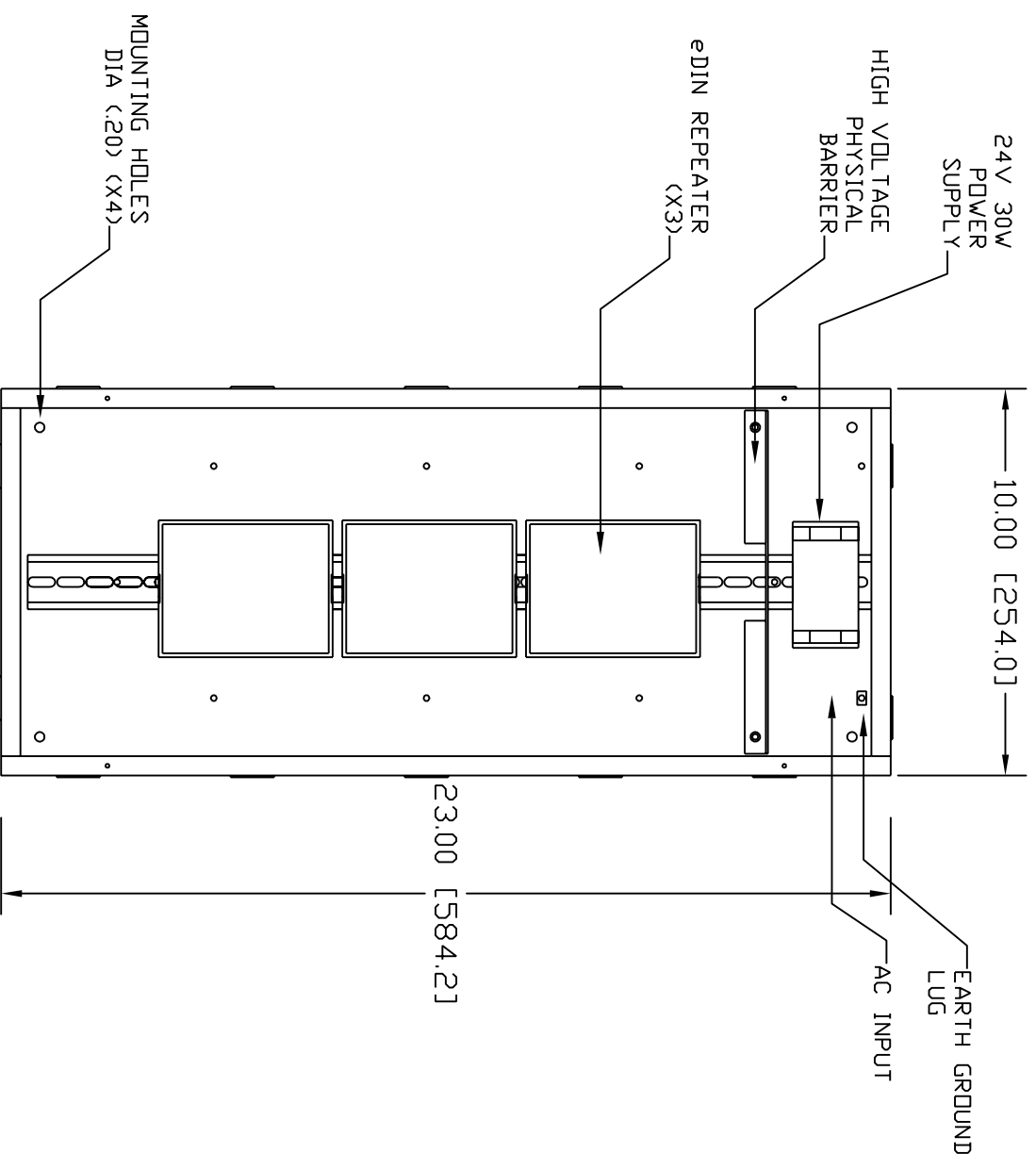
PART NUMBER: 4808



**Pathway Connectivity Inc.**  
 103 Inglewood Plaza, 1439 17th Avenue SE  
 Calgary, Alberta, Canada T2G 1J9  
 Phone: +1(403)243-8110 Fax: +1(403)287-1281  
<http://www.pathwayconnect.com>

DRAWN BY: RSA Pathway Connectivity Inc.  
 DATE: Jan 2010  
 CHECKED: DAVID HIGGINS  
 SCALE: NTS  
 UNITS: INCHES [mm]

REV  
**B**



**SPECIFICATIONS**

SURFACE MOUNT ENCLOSURE  
 MATERIAL - 18 GA. COLD ROLLED STEEL  
 FINISH - MATTE BLACK POWDER COAT  
 35mm x 7.5mm DIN RAIL MOUNTING  
 10.2"x13.2"x.38" FORMED COVER (included)

**4809 - 12 way eDIN Installation Repeater**

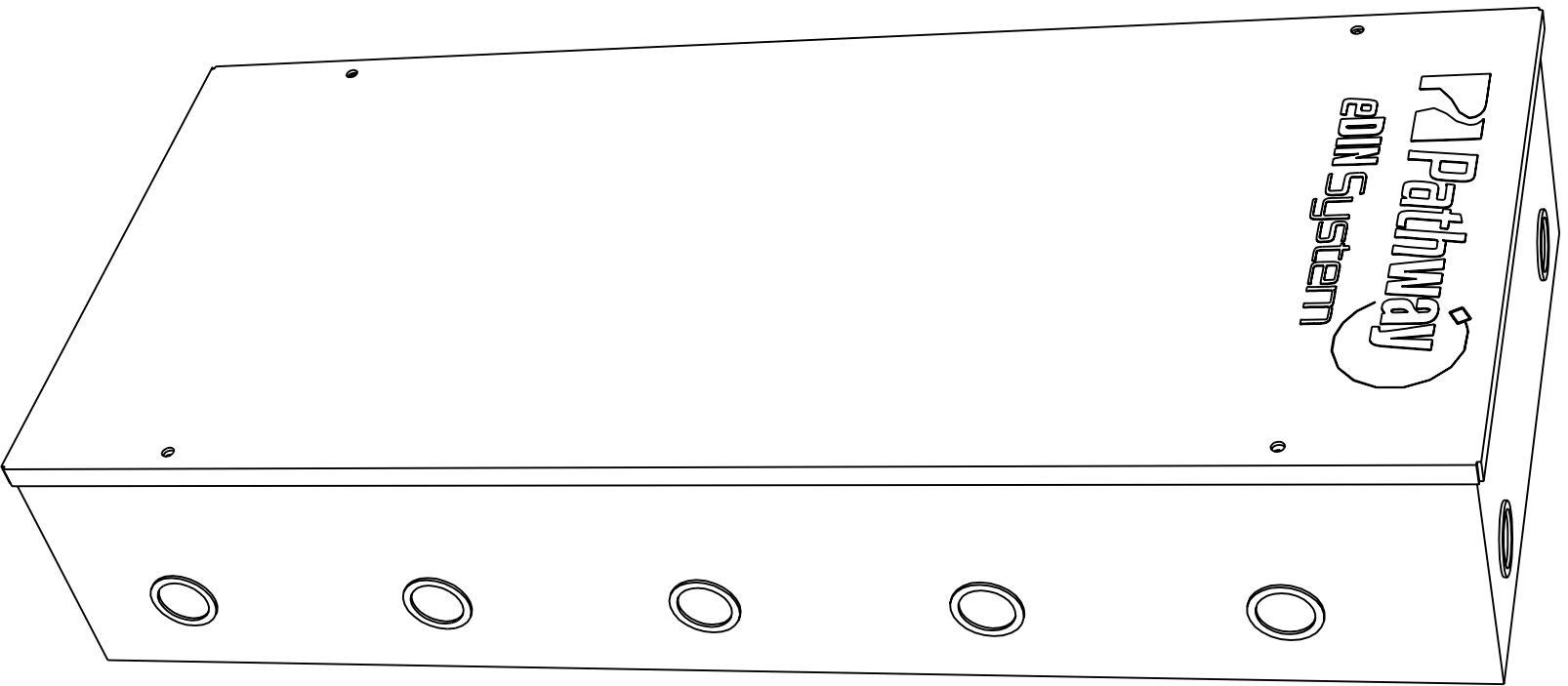
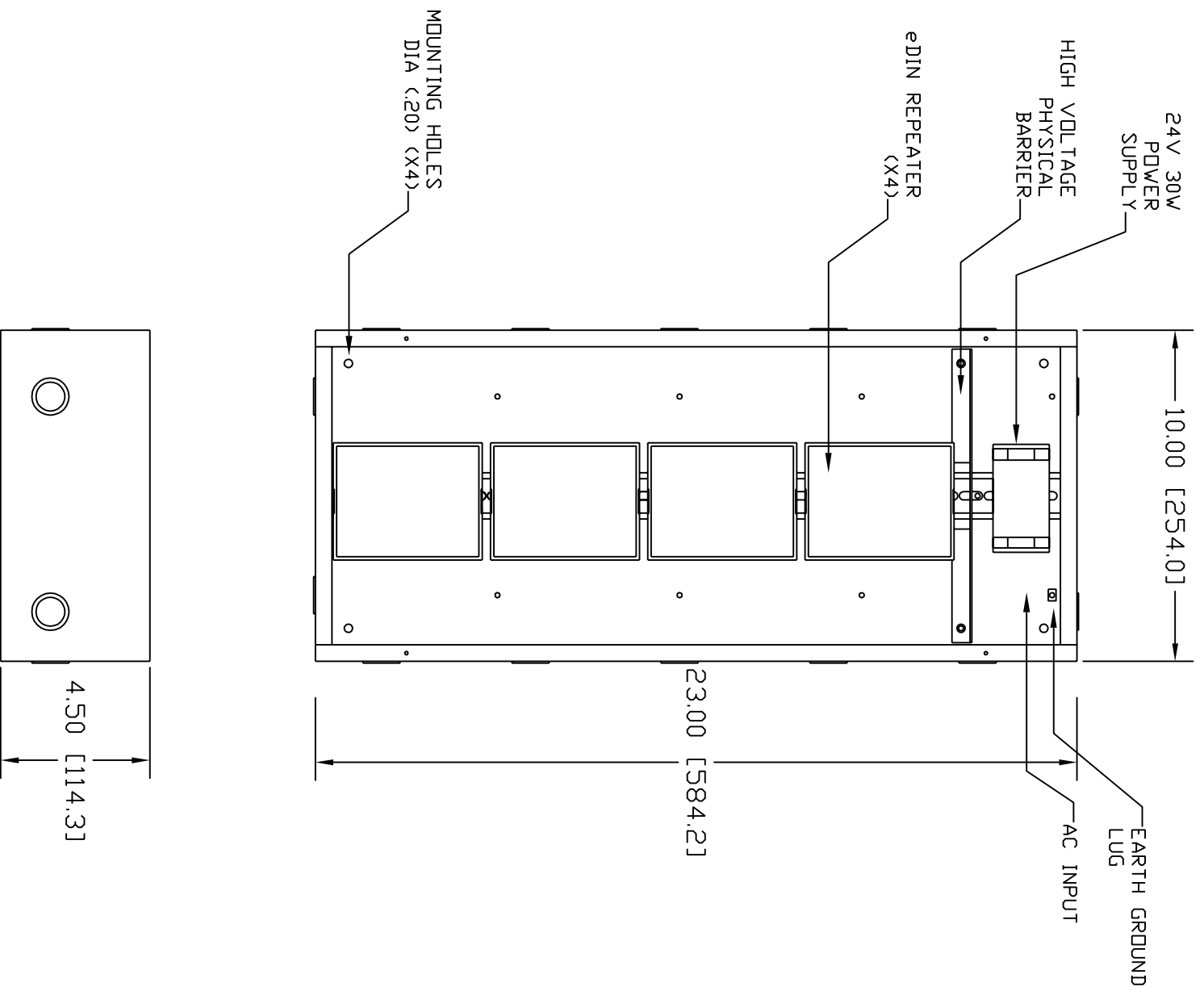
FILENAME: 480X-eDIN Installation Repeater.DWG PART NUMBER: 4809



**Pathway Connectivity Inc.**  
 103 Inglewood Plaza, 1439 17th Avenue SE  
 Calgary, Alberta, Canada T2G 1J9  
 Phone: +1(403)243-8110 Fax: +1(403)287-1281  
<http://www.pathwayconnect.com>

DRAWN BY:	RSA Pathway Connectivity Inc.
DATE:	Jan 2010
CHECKED:	DAVID HIGGINS
SCALE:	NTS
UNITS:	INCHES [mm]

REV **B**



**SPECIFICATIONS**

SURFACE MOUNT ENCLOSURE  
 MATERIAL - 18 GA. COLD ROLLED STEEL  
 FINISH - MATTE BLACK POWDER COAT  
 35mm x 7.5mm DIN RAIL MOUNTING  
 10.2"x13.2"x.38" FORMED COVER (included)

**4810 - 16 way eDIN Installation Repeater**

FILENAME: 480X-eDIN Installation Repeater.DWG

PART NUMBER: 4810



**Pathway Connectivity Inc.**  
 103 Inglewood Plaza, 1439 17th Avenue SE  
 Calgary, Alberta, Canada T2G 1J9  
 Phone: +1(403)243-8110 Fax: +1(403)287-1281  
<http://www.pathwayconnect.com>

DRAWN BY:	RSA, Pathway Connectivity Inc.
DATE:	Jan 2010
CHECKED:	DAVID HIGGINS
SCALE:	NTS
UNITS:	INCHES [mm]

REV **B**