

SPECIFICATIONS

SURFACE MOUNT ENCLOSURE
 MATERIAL - 18 GA. COLD ROLLED STEEL
 FINISH - MATTE BLACK POWDER COAT
 35mm x 7.5mm DIN RAIL MOUNTING
 10.25" x 13.25" x .38" FORMED COVER (included)

4813 - 4 way EDIN DMX/RDM Installation Splitter

FILENAME: 4813.edin.DMX-RDM.Splitters.DWG

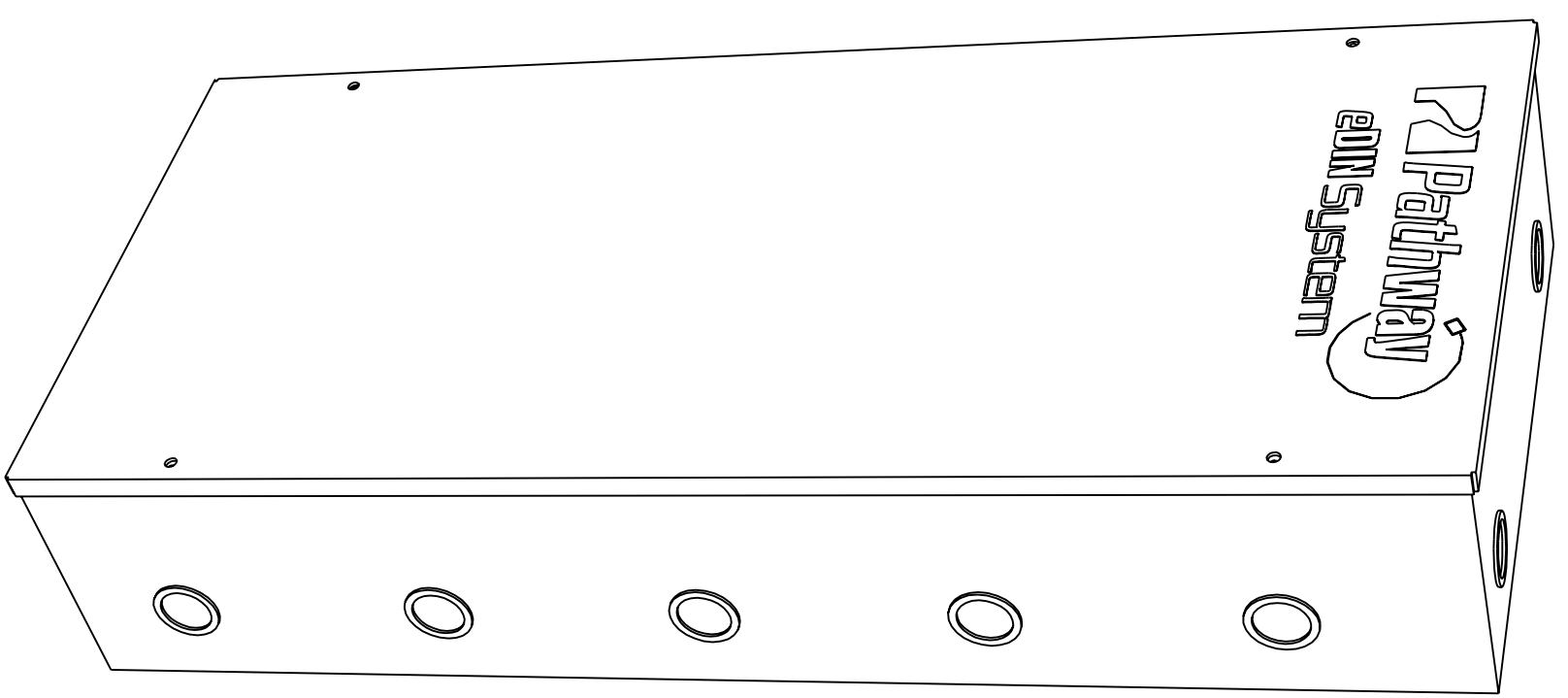
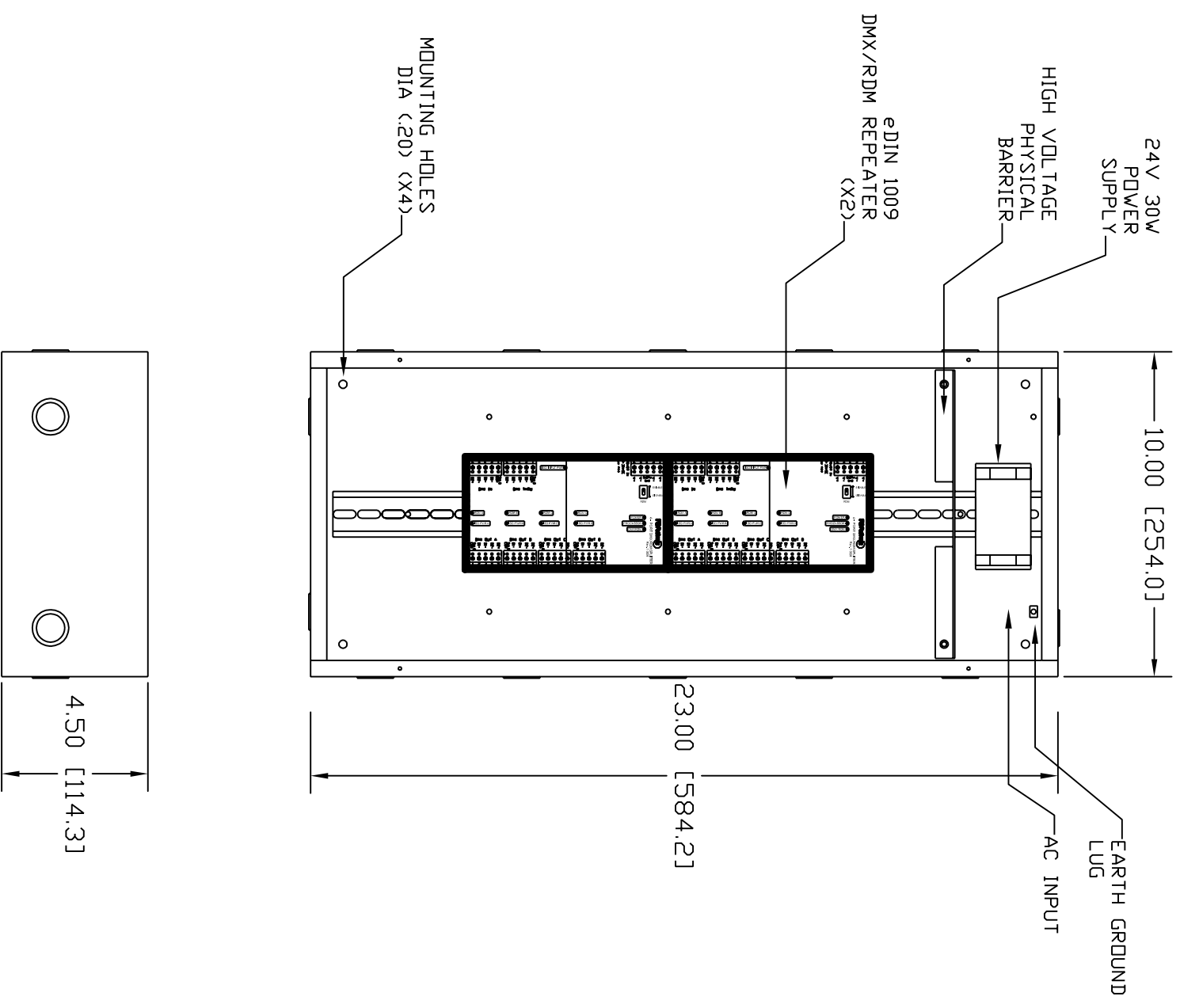
PART NUMBER: 4813



Pathway Connectivity Inc.
 103 Inglewood Plaza, 1439 17th Avenue SE
 Calgary, Alberta, Canada T2G 1J9
 Phone: +1(403)243-8110 Fax: +1(403)287-1281
<http://www.pathwayconnect.com>

DRAWN BY: RSA Pathway Connectivity Inc.
 DATE: Jan 2010
 CHECKED: DAVID HIGGINS
 SCALE: NTS
 UNITS: INCHES [mm]

REV
A



SPECIFICATIONS

SURFACE MOUNT ENCLOSURE
 MATERIAL - 18 GA. COLD ROLLED STEEL
 FINISH - MATTE BLACK POWDER COAT
 35mm x 7.5mm DIN RAIL MOUNTING
 10.25"x23.25"x.38" FORMED COVER (included)

4814 - 8-way eDIN DMX/RDM Installation Splitter

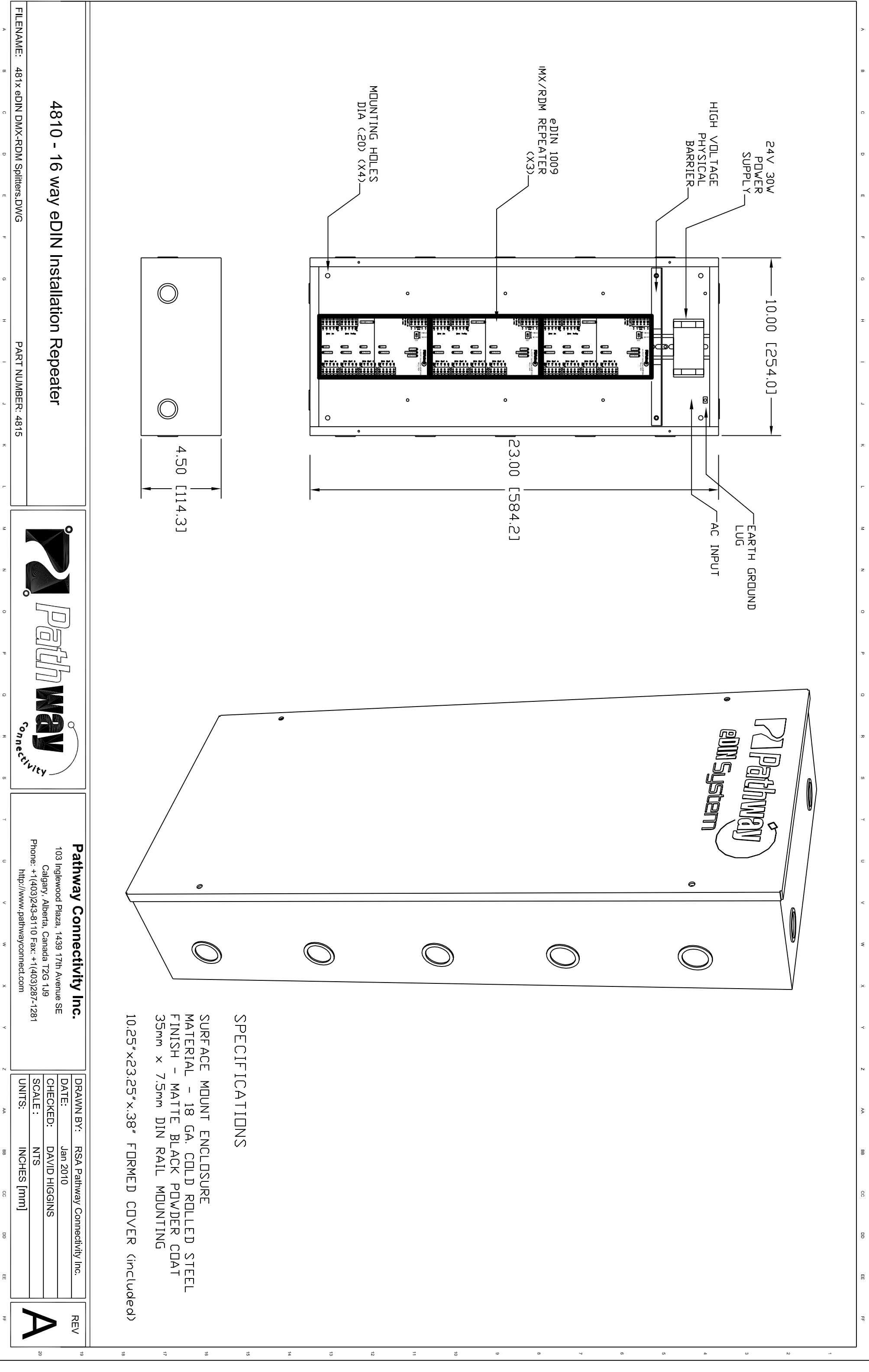
FILENAME: 4814 x eDIN DMX-RDM Splitters.DWG PART NUMBER: 4814



Pathway Connectivity Inc.
 103 Inglewood Plaza, 1439 17th Avenue SE
 Calgary, Alberta, Canada T2G 1J9
 Phone: +1(403)243-8110 Fax: +1(403)287-1281
<http://www.pathwayconnect.com>

DRAWN BY:	RSA Pathway Connectivity Inc.
DATE:	Jan 2010
CHECKED:	DAVID HIGGINS
SCALE:	NTS
UNITS:	INCHES [mm]

REV **A**



4810 - 16 way eDIN Installation Repeater

FILENAME: 481x edIN DMX-RDM Splitters.DWG

PART NUMBER: 4815



Pathway Connectivity Inc.
 103 Inglewood Plaza, 1439 17th Avenue SE
 Calgary, Alberta, Canada T2G 1J9
 Phone: +1(403)243-8110 Fax: +1(403)287-1281
<http://www.pathwayconnect.com>

DRAWN BY:	RSA Pathway Connectivity Inc.
DATE:	Jan 2010
CHECKED:	DAVID HIGGINS
SCALE:	NTS
UNITS:	INCHES [mm]

REV **A**

SPECIFICATIONS

- SURFACE MOUNT ENCLOSURE
- MATERIAL - 18 GA. COLD ROLLED STEEL
- FINISH - MATTE BLACK POWDER COAT
- 35mm x 7.5mm DIN RAIL MOUNTING
- 10.25"x23.25"x.38" FORMED COVER (included)