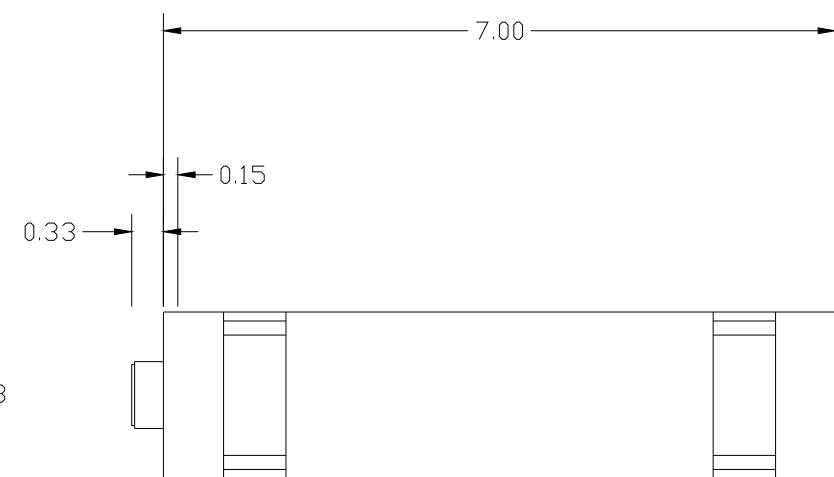
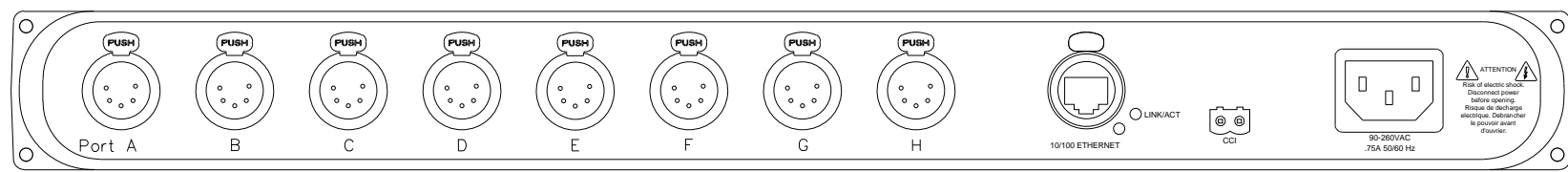




FRONT



SIDE



REAR



6421 PATHPORT OCTO
REAR XLR5F

FILENAME: 642x-PathportOcto.dwg

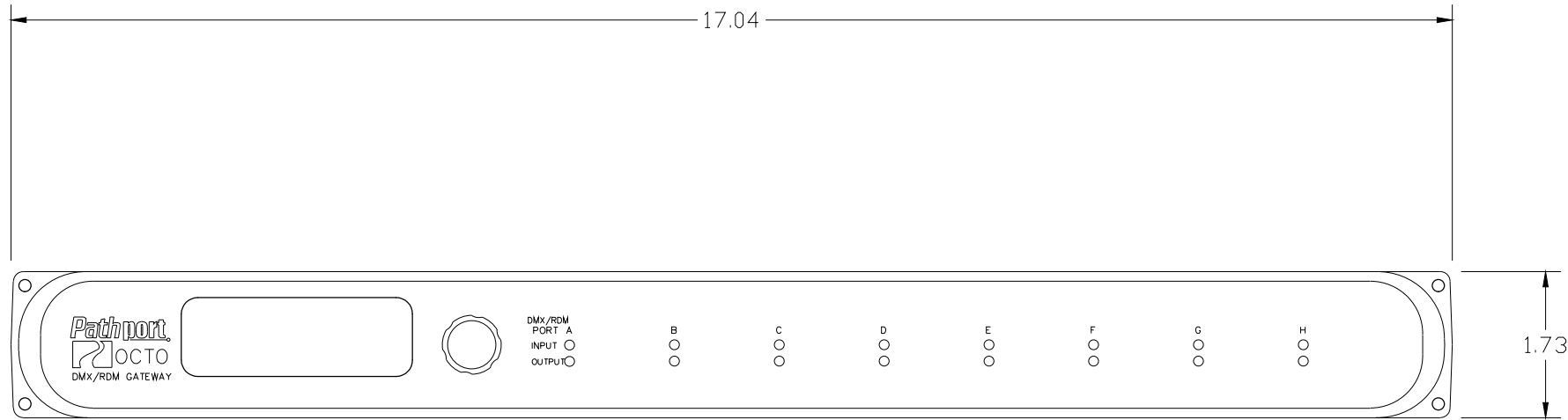
PART NUMBER: 6421



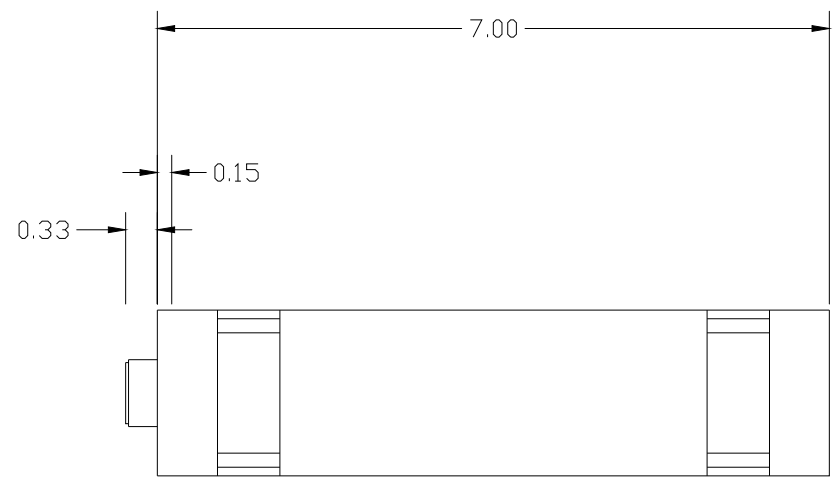
Pathway Connectivity
103 Inglewood Plaza, 1439 17th Avenue SE
Calgary, Alberta, Canada T2G 1J9
Phone: +1(403)243-8110 Fax: +1(403)287-1281
<http://www.pathwayconnect.com>

| | |
|-----------|----------------|
| DRAWN BY: | BRIAN F. EVANS |
| DATE: | 11/30/2018 |
| CHECKED: | ROBERT BELL |
| SCALE : | NTS |
| UNITS: | INCHES [mm] |

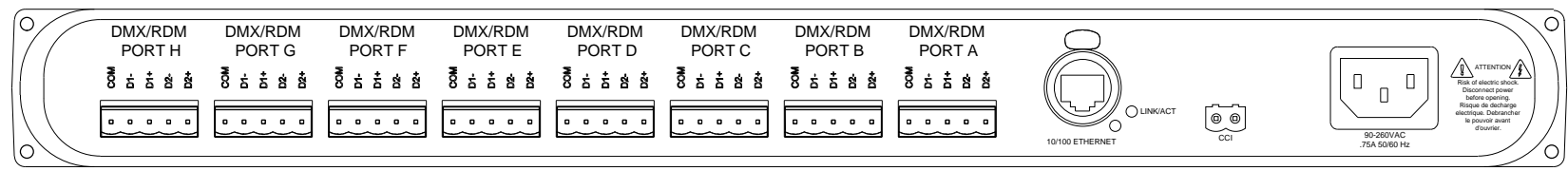
REV
A



FRONT



SIDE



REAR



6422 PATHPORT OCTO
REAR TERMINALS

FILENAME: 642x-PathportOcto.dwg

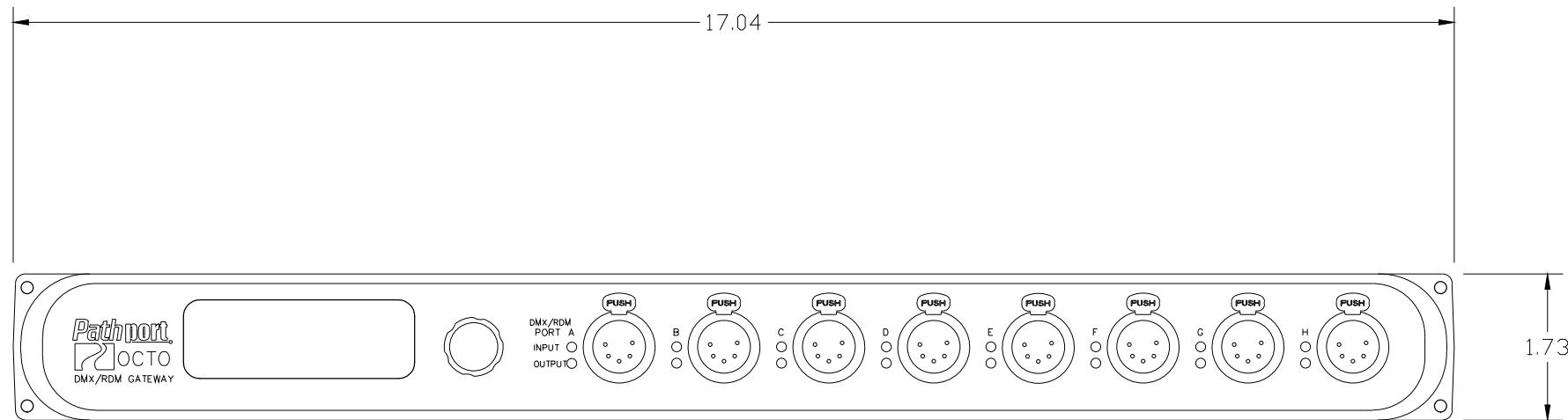
PART NUMBER: 6422



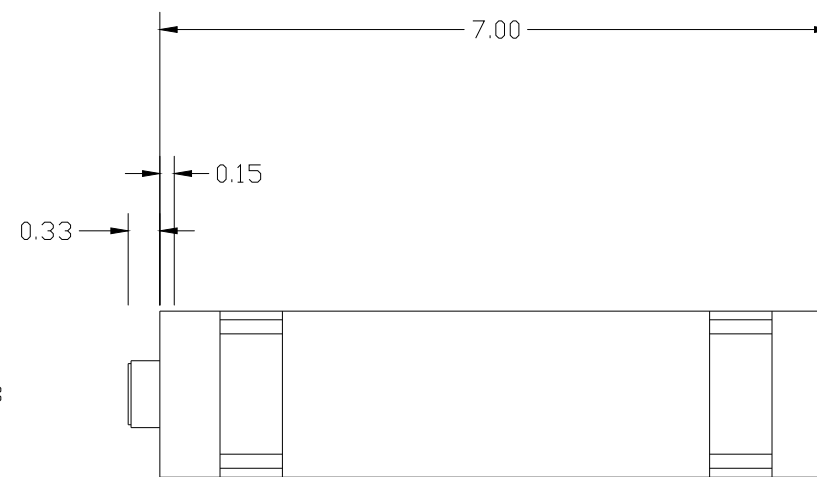
Pathway Connectivity
103 Inglewood Plaza, 1439 17th Avenue SE
Calgary, Alberta, Canada T2G 1J9
Phone: +1(403)243-8110 Fax: +1(403)287-1281
<http://www.pathwayconnect.com>

| | |
|-----------|----------------|
| DRAWN BY: | BRIAN F. EVANS |
| DATE: | 11/30/2018 |
| CHECKED: | ROBERT BELL |
| SCALE : | NTS |
| UNITS: | INCHES [mm] |

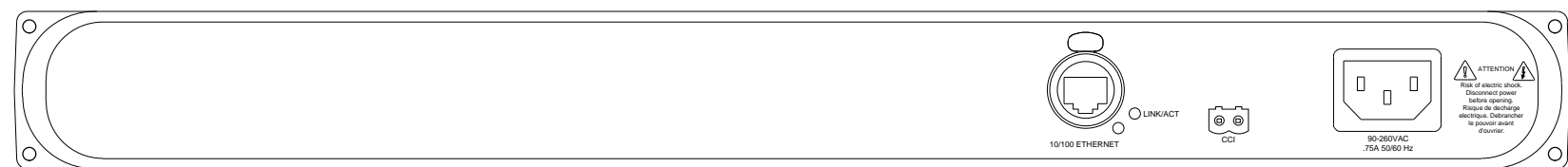
REV
A



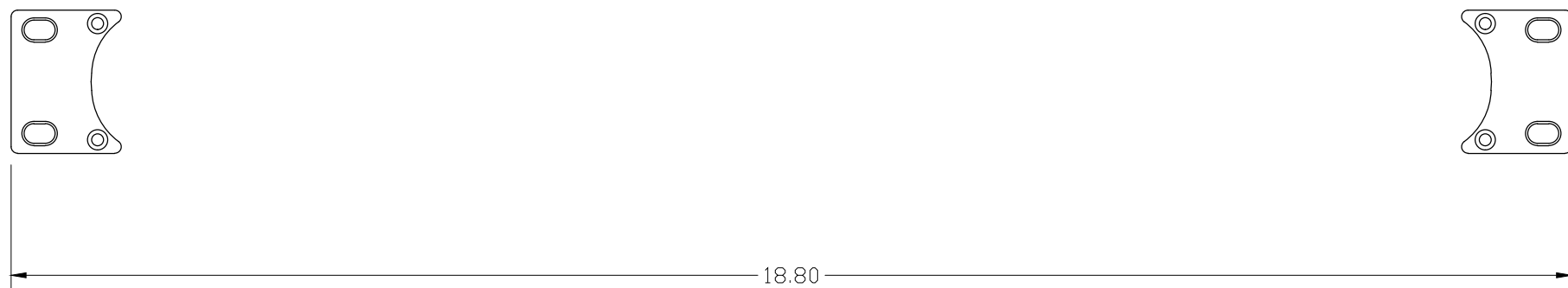
FRONT



SIDE



REAR



6423 PATHPORT OCTO
FRONT XLR5F

FILENAME: 642x-PathportOcto.dwg

PART NUMBER: 6423



Pathway Connectivity
103 Inglewood Plaza, 1439 17th Avenue SE
Calgary, Alberta, Canada T2G 1J9
Phone: +1(403)243-8110 Fax: +1(403)287-1281
<http://www.pathwayconnect.com>

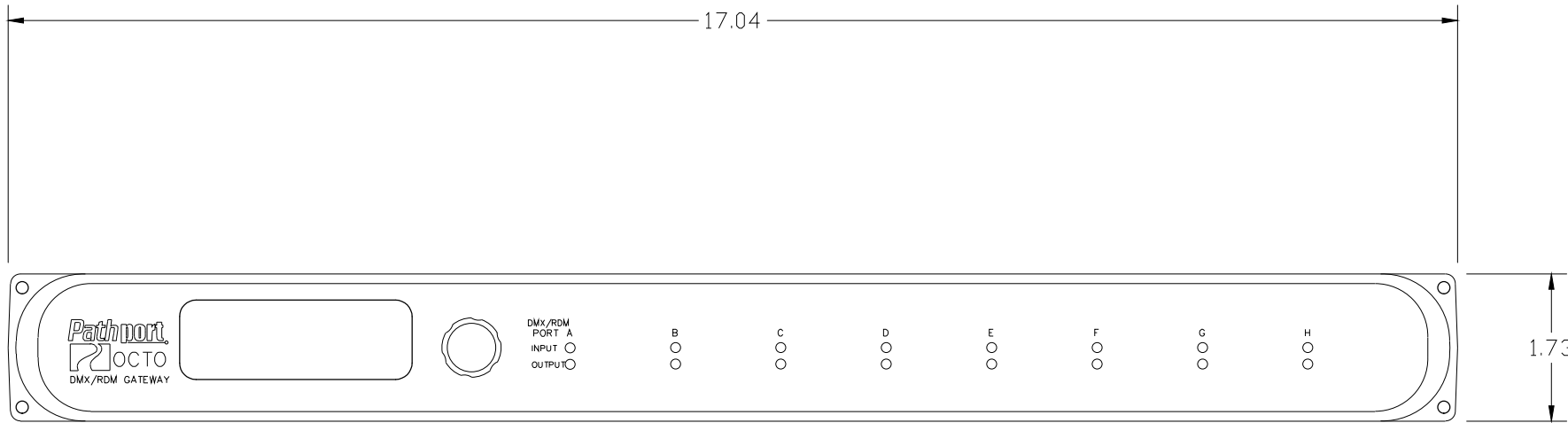
DRAWN BY: BRIAN F. EVANS
DATE: 11/30/2018
CHECKED: ROBERT BELL
SCALE: NTS
UNITS: INCHES [mm]

REV

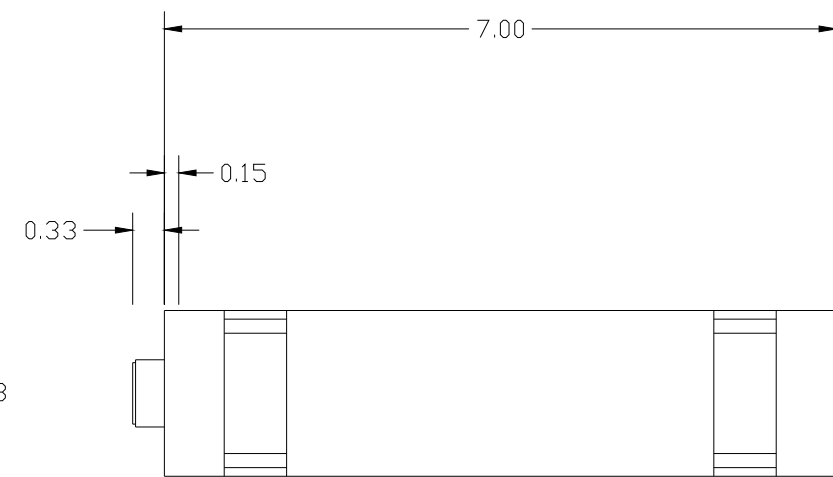
A

A B C D E F G H I J K L M N O P Q R S T U V W X Y Z AA BB CC DD EE FF

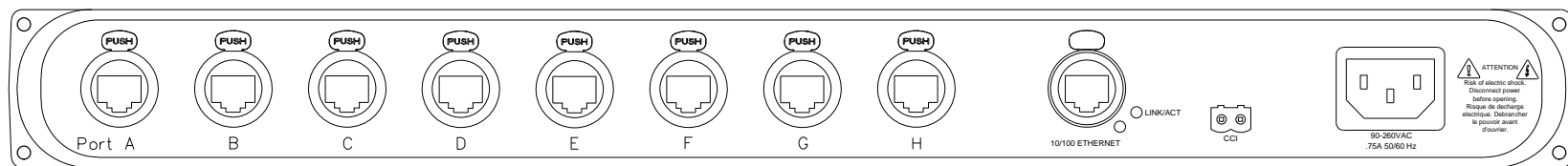
1 2 3 4 5 6 7 8 9 10 11 12 13 14 15 16 17 18 19 20



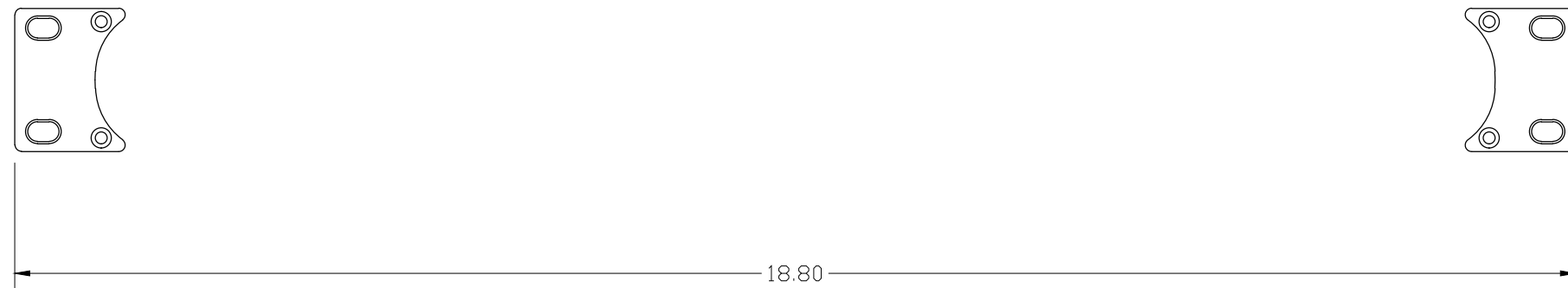
FRONT



SIDE



REAR



6426 PATHPORT OCTO
REAR RJ45 ETHERCON

FILENAME: 642x-PathportOcto.dwg

PART NUMBER: 6426



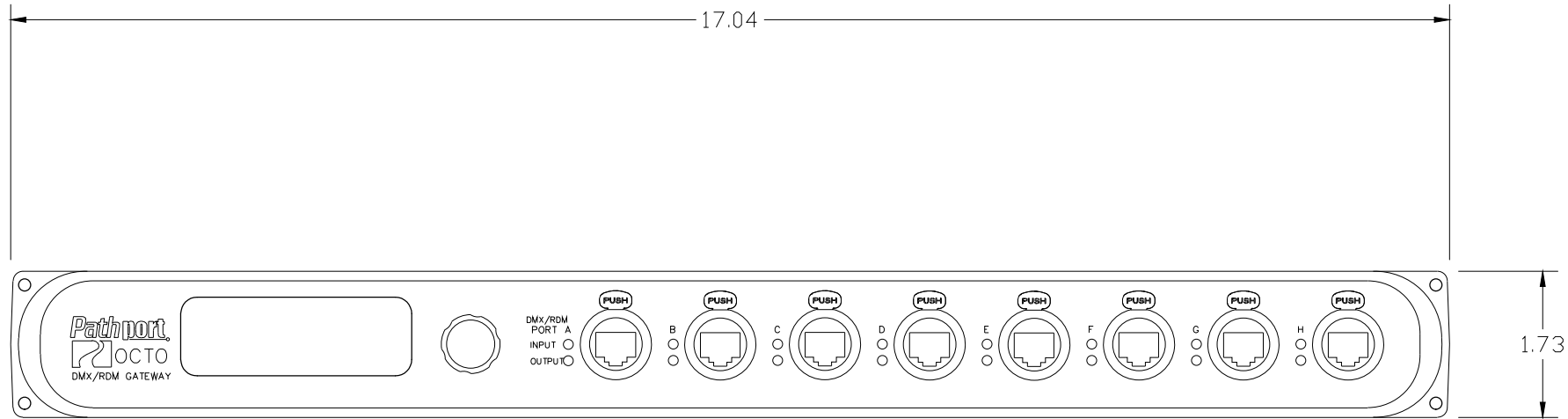
Pathway Connectivity
 103 Inglewood Plaza, 1439 17th Avenue SE
 Calgary, Alberta, Canada T2G 1J9
 Phone: +1(403)243-8110 Fax: +1(403)287-1281
<http://www.pathwayconnect.com>

DRAWN BY: BRIAN F. EVANS
 DATE: 11/30/2018
 CHECKED: ROBERT BELL
 SCALE: NTS
 UNITS: INCHES [mm]

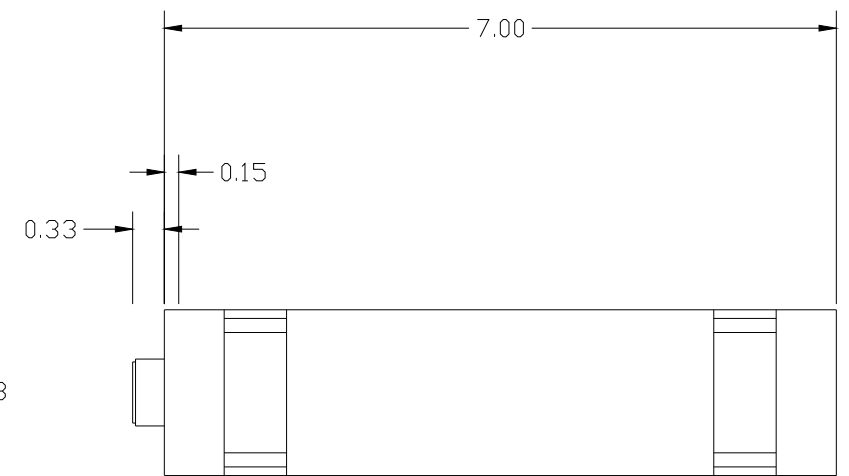
REV
A

A B C D E F G H I J K L M N O P Q R S T U V W X Y Z AA BB CC DD EE FF

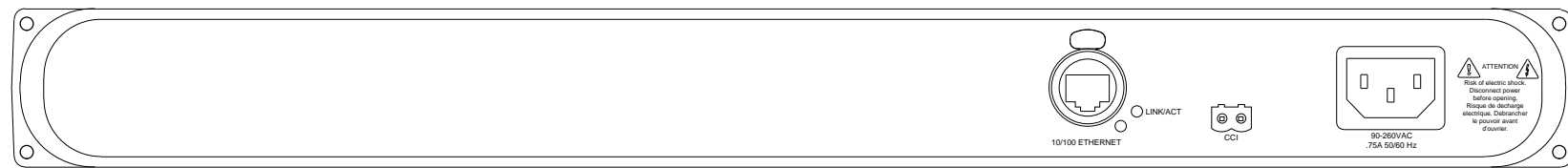
1 2 3 4 5 6 7 8 9 10 11 12 13 14 15 16 17 18 19 20



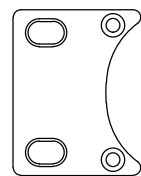
FRONT



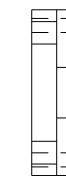
SIDE



REAR



18.80



6427 PATHPORT OCTO
FRONT RJ45 ETHERCON

FILENAME: 642x-PathportOcto.dwg

PART NUMBER: 6427



Pathway Connectivity
103 Inglewood Plaza, 1439 17th Avenue SE
Calgary, Alberta, Canada T2G 1J9
Phone: +1(403)243-8110 Fax: +1(403)287-1281
<http://www.pathwayconnect.com>

DRAWN BY: BRIAN F. EVANS
DATE: 11/30/2018
CHECKED: ROBERT BELL
SCALE: NTS
UNITS: INCHES [mm]

REV

A